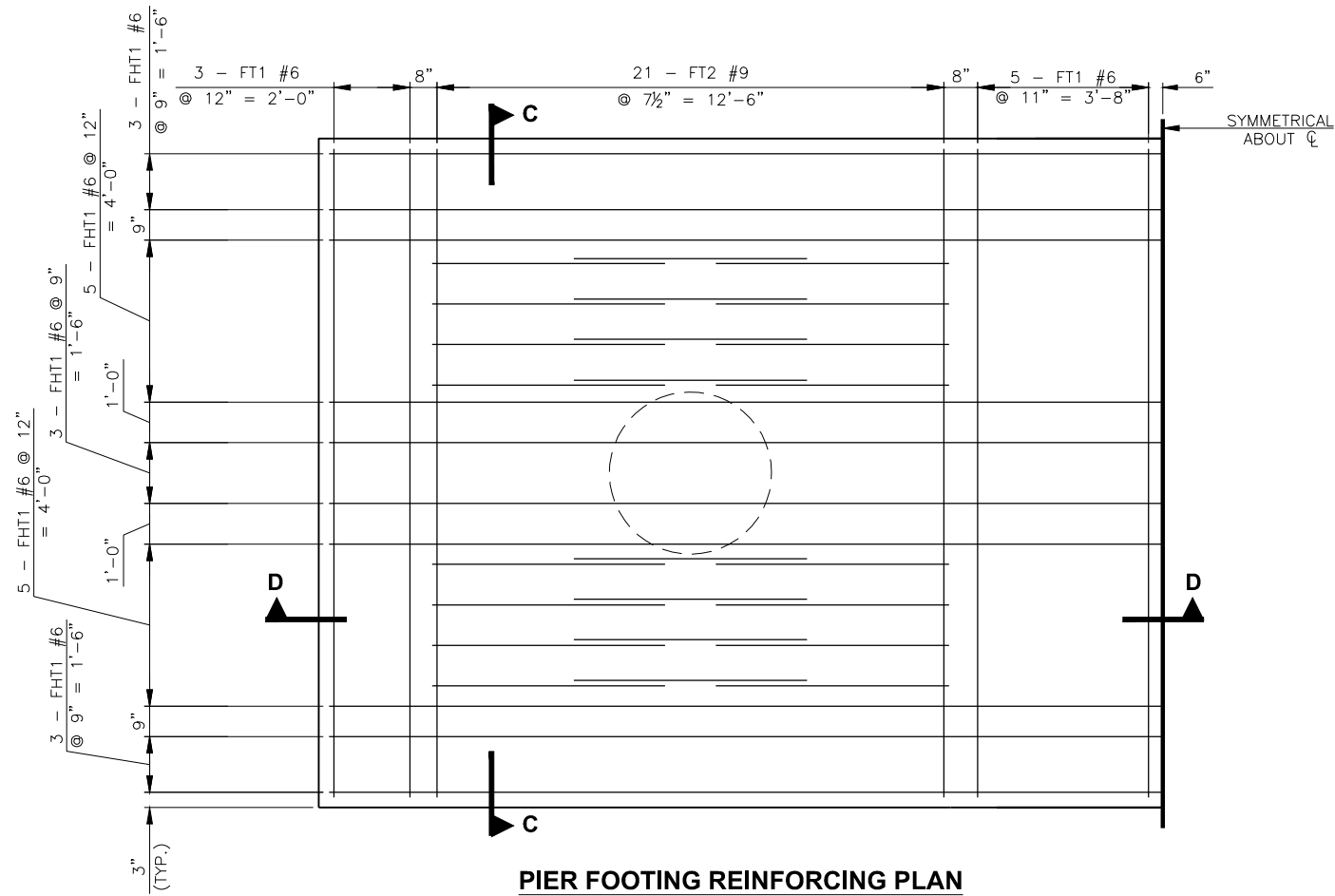
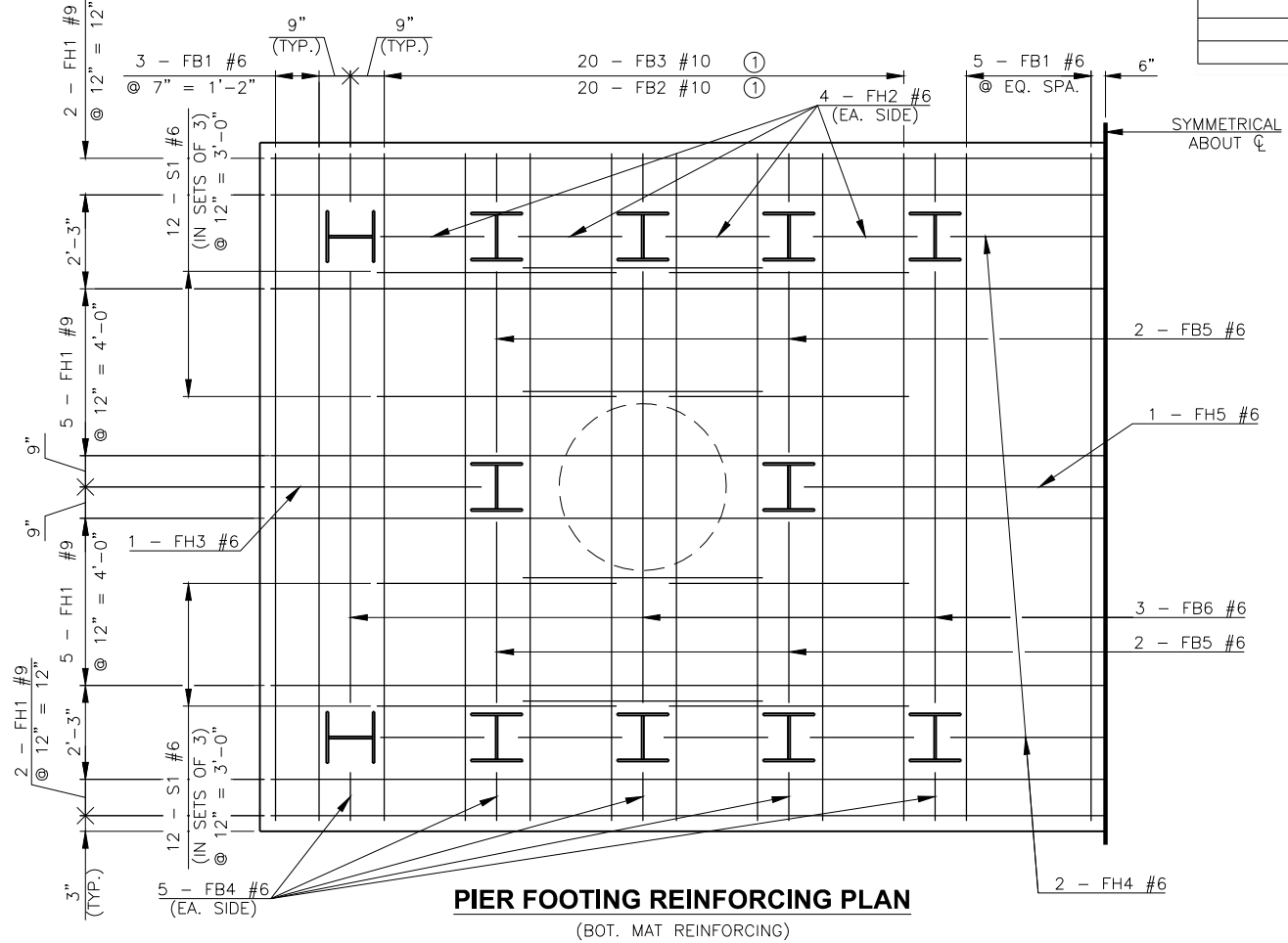


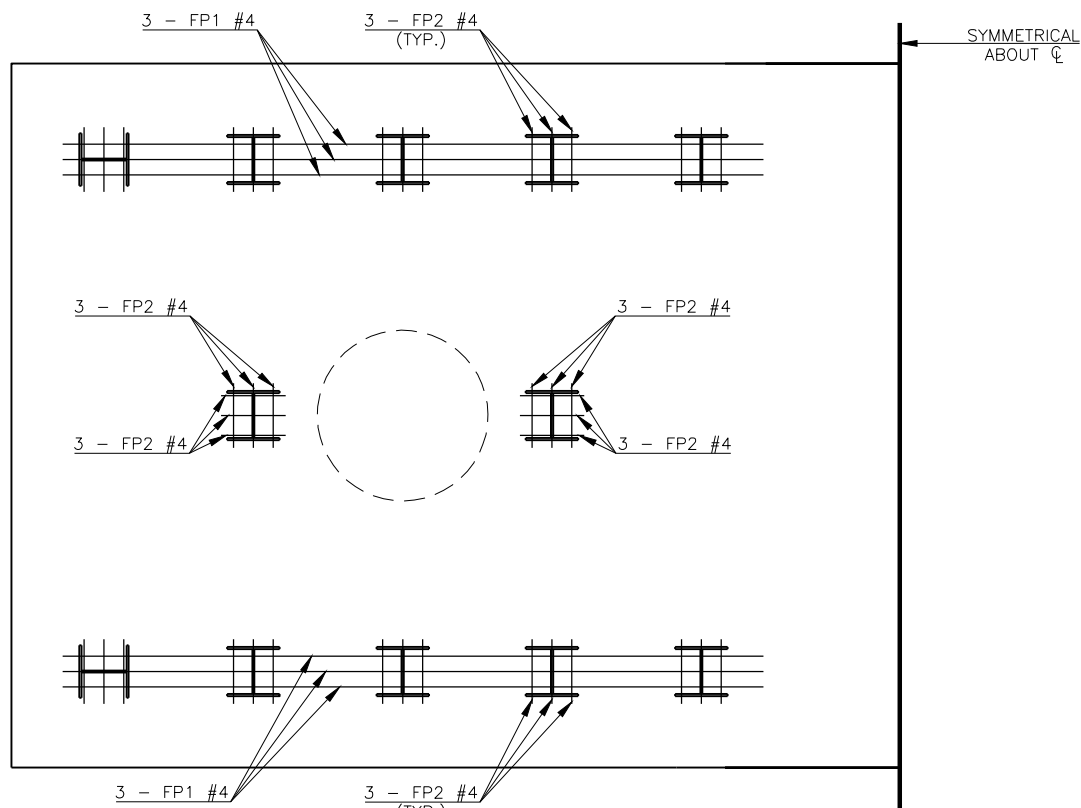
DESCRIPTION	REVISIONS	DATE



PIER FOOTING REINFORCING PLAN
(TOP MAT REINFORCING)



PIER FOOTING REINFORCING PLAN
(BOT. MAT REINFORCING)



PIER FOOTING REINFORCING PLAN
(REINFORCING OVER TOP OF PILES)

NOTE:
PLACE BARS AS SHOWN, MINIMUM HORIZONTAL CLEARANCE BETWEEN BARS IS 3".

NOTE:
FOR SECTIONS C-C AND D-D, SEE SHEET 28.

NOTE:
FOR BAR BENDS AND BAR LIST, SEE SHEET 30.

① 5 BARS AT EQ. SPA. BTWN. PILES, SEE SECTION D-D FOR BAR PLACEMENT.

THIS DRAWING IS PRELIMINARY IN NATURE. IT IS NOT A FINAL SIGNED AND SEALED DRAWING

DESIGN	J.W.H.	SH34 OVER N. PERSIMMON CREEK	WOODWARD COUNTY
DRAWN	R.A.P.	BRIDGE A	
CHECKED	J.W.H.	PIER NO. 1 AND 2 DETAILS (SHEET 3 OF 3)	
APPROV.	T.A.C.		
SQUAD	CEC		
		JOB PIECE NO. 28827(04) SHEET NO. 29	